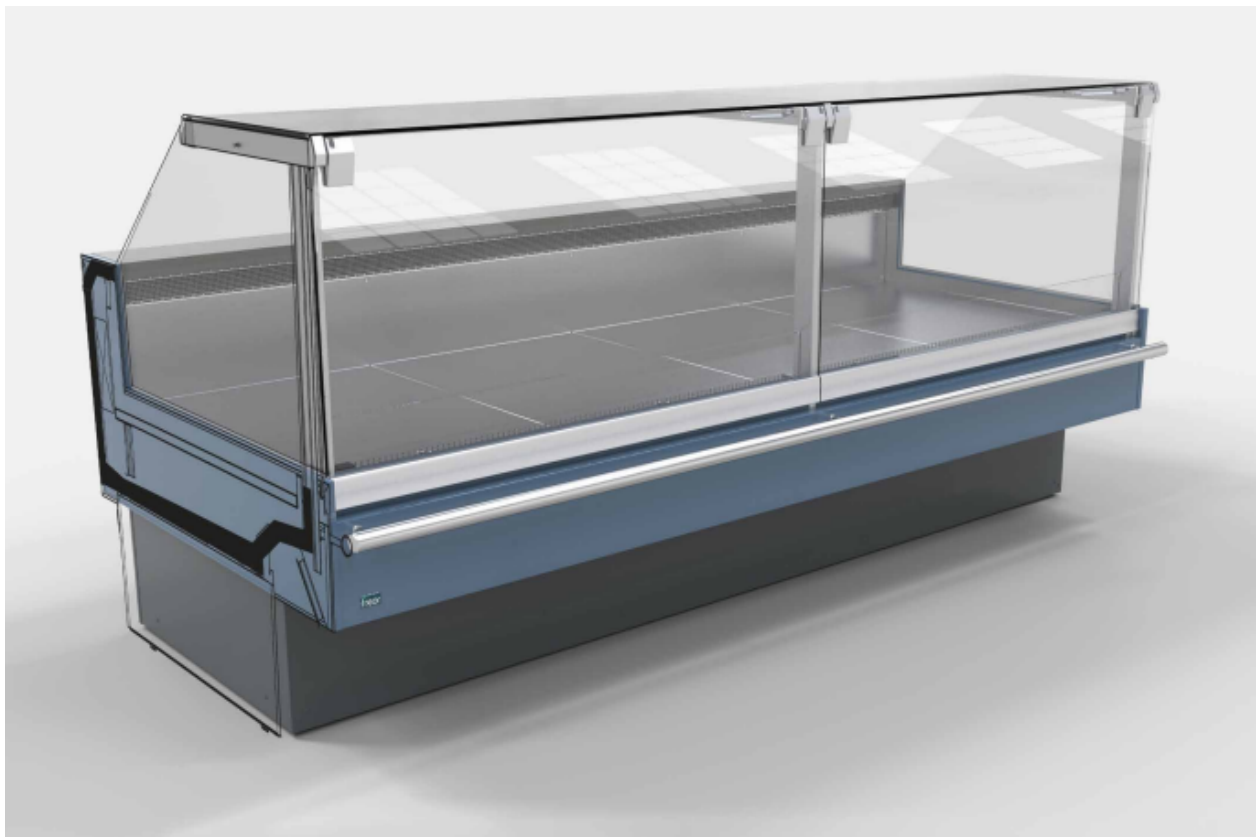
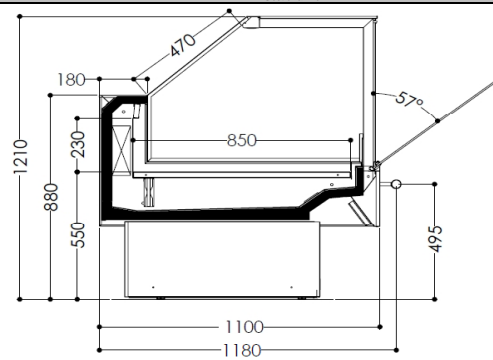


VEGA QB HG R290

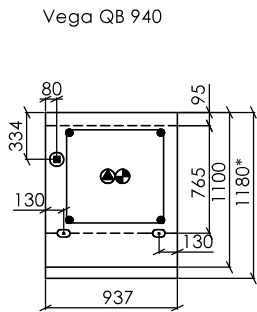
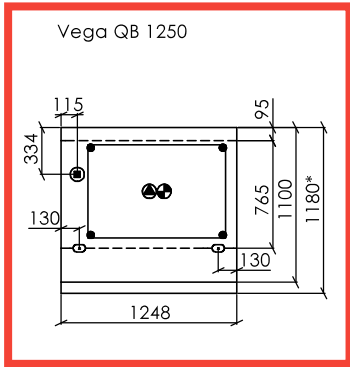
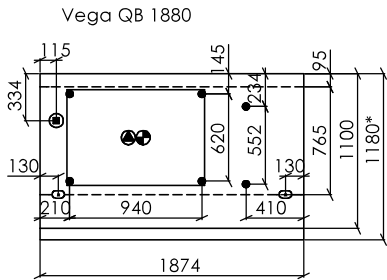
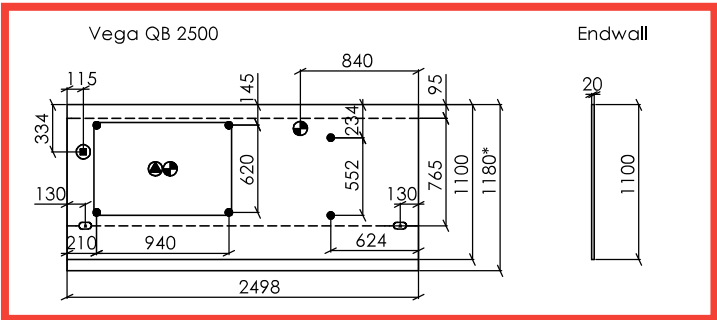
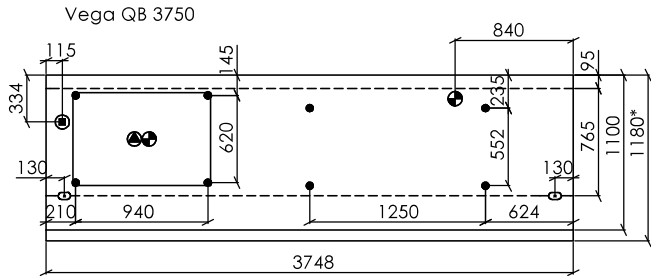
Refrigerated counter plugin

Climatic class	3
Humidity	60%
Ambient temp.	25°C
Air speed	0.2m/sec

		Module	94	125	188	250	375	OC 90	IC 90	OC 45	IC 45			
Dimensions and weights	Module Length without end walls, mm		940	1290	1874	2500	3750	-	-	-	-			
	Module Length with end walls, mm		980	1330	1914	2540	3790	-	-	-	-			
	Display area, m ²		0.86	1.06	1.59	2.13	3.19	1.31	1.55	0.66	0.77			
	Capacity, m ³		0.21	0.24	0.37	0.49	0.73	0.30	0.36	0.15	0.18			
	Weight, kg		102	138	203	250	368	250	308	132	158			
Refrigeration data	Refrigeration demand Q (kW)	Class of temp.	H1	T _{evap} =+1/+10 °C	T _{evap} =-6 C	0.259	0.344	0.516	0.689	1.033	0.502	0.689	0.309	0.343
			M2	T _{evap} =-1/+7 °C	T _{evap} =-8 C	0.270	0.359	0.539	0.719	1.078	0.518	0.710	0.319	0.354
			M1	T _{evap} =-1/+5 °C	T _{evap} =-9 C	0.281	0.374	0.561	0.749	1.123	-	-	-	-
	Refrigerant quantity in operation			R290, g		0.150	0.150	0.150	0.150	0.150	0.150	0.150	0.150	0.150
	Electronic Valve			Carel R290		E2V03	E2V05	E2V05	E2V05	E2V09	E2V05	E2V05	E2V05	E2V05
	Capillary tube													*Stand Alone version only
Electrical installations	Lighting	Option. Lighting LED T5, W		Quantity	1	1	2	2	3	-	-	-	-	
		W	9	11	18	22	33	-	-	-	-	-		
	Option. Lighting LED Canopy, W		Quantity	1	1	2	2	3	-	-	-	-		
	W	17	22	34	44	66	-	-	-	-	-			
	Fans	Evaporator fans		Quantity	1	1	2	2	3	1	4	1	1	
		W	4.4	4.4	8.8	8.8	13.2	13.2	3	17.6	3	3		
	Front window fans		Quantity	1	1	1	2	3	3	3	2	2		
	W	1.2	1.2	1.2	2.4	3.6	3.6	3.6	3.6	2.4	2.4			
	Heaters	Option. Defrost heater, W		Quantity	300	400	600	800	1200	400	800	300	400	
		Power input, W	-10/+5°C	252	343	343	498	747	343	498	343	343		
Compressor	Condenser fans, W (Stand Alone version only)		Quantity	16	16	16	16	10 x2	16	16	16	16		
Power input		230V/50Hz/1ph												
Protection switch		1P C16A 1P C16A 1P C16A 1P C16A 1P C16A 1P C16A 1P C16A 1P C16A 1P C16A												
Power cable		3x2.5mm - 3.5m Length. 16A Plug												
Defrost settings	Defrost safety times		4x24h											
	Max. evaporator temperature the end of defrost		8°C											
	The maximum allowable time of defrost		30 min											
	Operation of the fans during the defrost		The fans are on											



Vega QB Plug-In



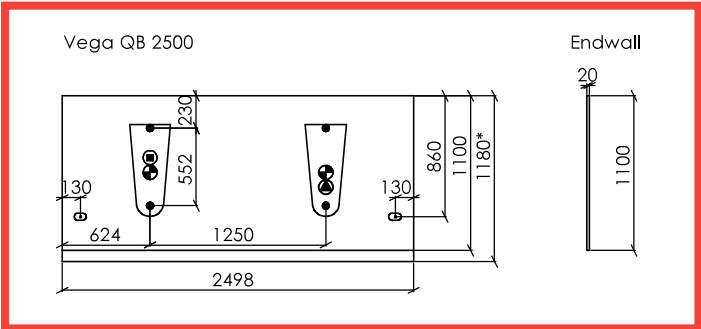
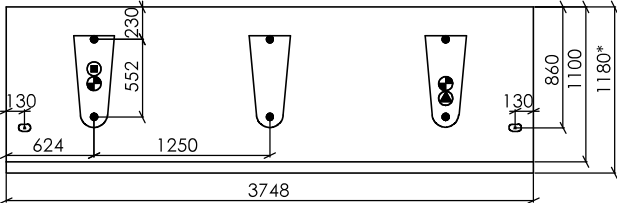
↑
Front of cabinet

* DIMENSIONS WITH BUMPER
BOTTOM DECORATION IS MARKED WITH DASHED LINE
OVERALL DIMENSIONS ARE SHOWN WITHOUT ENDWALLS

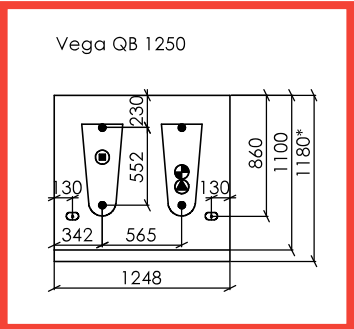
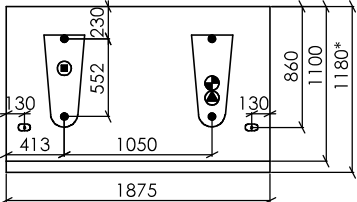
- △ GLYCOL CONNECTIONS ON THE TOP
- ▲ GLYCOL CONNECTIONS UNDER THE BOTTOM
- ELECTRICAL CONNECTIONS ON THE TOP
- ELECTRICAL CONNECTIONS UNDER THE BOTTOM
- CABINET LEGS
- ◐ CONDENSATE DRAINAGE, EXTERNAL DIAMETER OF OUTLET DRAIN TUBES 40MM
- REFRIGERANT LINES ON THE TOP
- REFRIGERANT LINES UNDER THE BOTTOM
- ◌ REFRIGERANT AND ELECTRIC LINES

Vega QB Plug-In

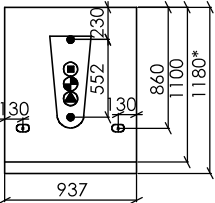
Vega QB 3750



Vega QB 1880



Vega QB 940



↑
Front of cabinet

* DIMENSIONS WITH BUMPER
OVERALL DIMENSIONS ARE SHOWN WITHOUT ENDWALLS

- | | | | |
|--|---|--|---|
| | GLYCOL CONNECTIONS ON THE TOP | | CONDENSATE DRAINAGE. EXTERNAL DIAMETER OF OUTLET DRAIN TUBES 40MM |
| | GLYCOL CONNECTIONS UNDER THE BOTTOM | | REFRIGERANT LINES ON THE TOP |
| | ELECTRICAL CONNECTIONS ON THE TOP | | REFRIGERANT LINES UNDER THE BOTTOM |
| | ELECTRICAL CONNECTIONS UNDER THE BOTTOM | | REFRIGERANT AND ELECTRIC LINES |
| | CABINET LEGS | | |